

Features

- Poppet design
- Leakage free
- Low operating force
- Both connection designed for max. pressure

Hand shut-off-valves

up to 1000 bar

Type SPV2

up to 32 l/min



Application

Rugged shut-off-valves with thread connection for in-line mounting.

Technical data

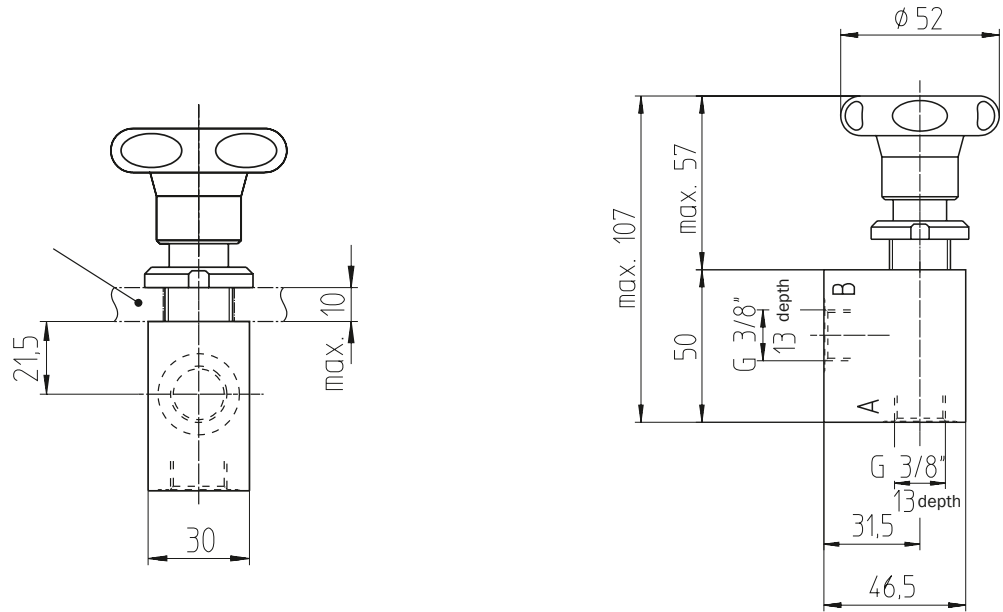
Type	SPV2.5-25750	SPV2.8-14600
Size	5	8
Flow rate max.	20 l/min	32 l/min
Max. pressure	1000 bar	1000 bar
Hydraulic fluid	mineral oil according to DIN 51524 (other fluids on request)	
Fluid temperature range	-20 to 80 °C	-30 to 80 °C
Ambient temperature range	-30 to 50 °C	-30 to 50 °C
Material	steel galvanized, passivated	stainless annealed machining steel aluminium
Weight	0,7 kg	1,3 kg

Hand shut-off-valves	Type SPV2
up to 1000 bar	up to 32 l/min

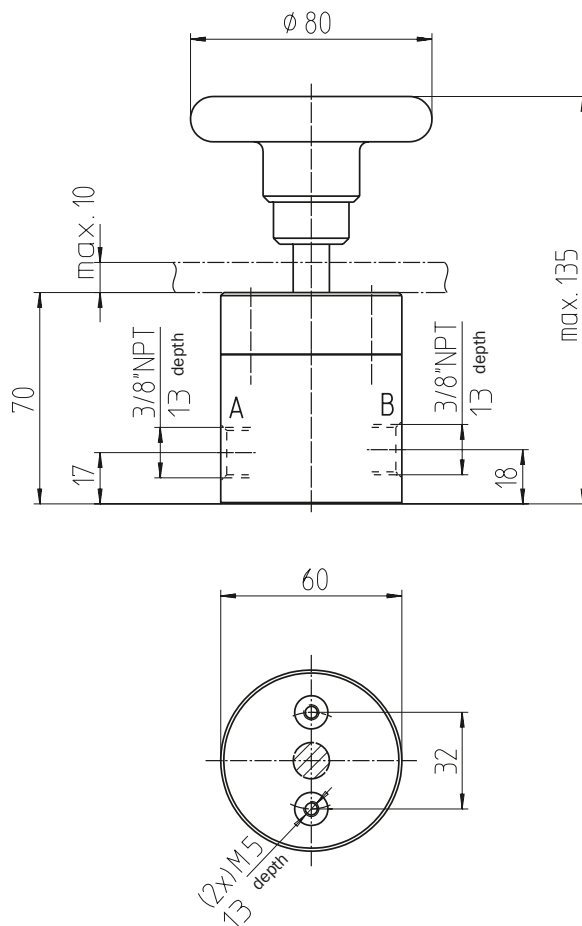
Dimension drawings

SPV2.5-25750

Reservoir cover or panel
fixation hole D = 21



SPV2.8-14600



Symbol



As we are constantly improving our products,
we keep us the right to change the technical
specifications without prior notice.

SPV2-EN-0608

Bieri Hydraulik AG
Könizstrasse 274
CH-3097 Liebefeld/Switzerland
Tel. +41 31 970 09 09
Fax +41 31 970 09 10
sales@bierihydraulics.com

BIERI
SWISS HYDRAULICS